

CATALOG RAMPE INCARCARE DIN ALUMINIU

Rampe Profesionale din
Aluminiu

Capacitate incarcare:

180 kg - 50 tone



LIGHTER STRONGER SMARTER



ALEGEREA MODELULUI DE RAMPA

H = inaltimea platformei de incarcare

P = ampatamentul / distanta intre roti

A = unghiul de incarcare (maxim 16,5° sau 30%)

C = latimea senilelor sau rotilor utilajului

(asigurati-va ca latimea interna a rampelor este mai mare cu min 15% decat senilele sau rotile utilajului ce urmeaza sa fie incarcate)

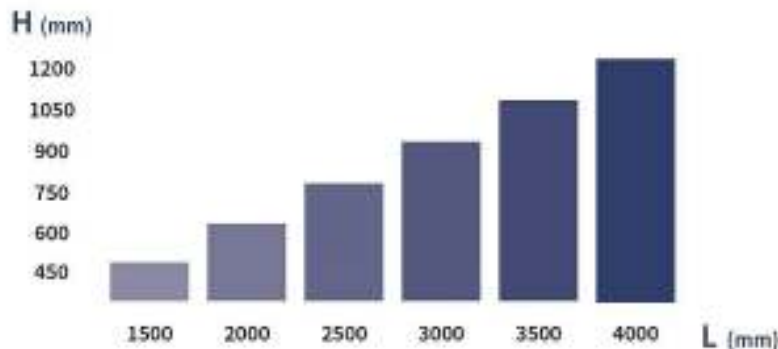
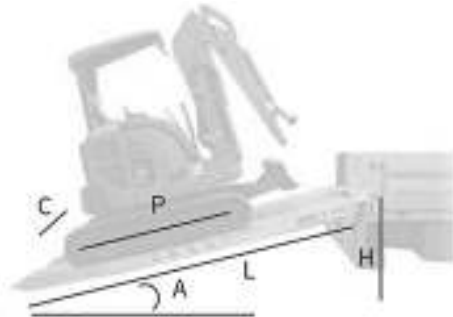
L = lungimea rampei

Exemplu:

$$L = \frac{H \times 100}{A}$$

Exemplu

$$L = \frac{1,10 \text{ m} \times 100}{30} = 3,66 \text{ m}$$



INSTRUCTIUNI DE UTILIZARE

- Utilizati intotdeauna rampe cu capacitatea de incarcare si ampatamentul indicat de producator
- Asigurati-va ca baza rampelor este paralela cu solul
- Rotile trailerului sau ale camionului pe care se face incarcarea trebuie sa fie blocate
- Ancorati rampele de puntea de incarcare prin unul din urmatoarele Sisteme de conectare:
 - Placa de fixare a rampei trebuie asezata intre platforma si bara de asezare a rampei
 - Rampele au un bolt de siguranta care se fixeaza de baza platformei prin orificiul special din rampa
 - Accelerarile, opririle si pornirile bruste trebuie evitate la fel ca si stationarea pe platforma in timpul incarcarii
- Este interzis urcarea pe marginile rampelor si in situatia in care rampele sunt ude
- Este strict interzisa fixarea rampelor pe alte dispozitive decat pe platforma pe care se incarca utilajul
- Utilizarea rampelor pentru incarcarea utilajelor cu senile din otel sau cilindrii / tamburi din otel este permisa doar in situatia in care se folosesc benzile speciale din cauciuc ramforsat
- Se recomanda in mod expres verificarea periodica a starii tehnice a rampelor

- Personalul desemnat in folosirea rampelor trebuie sa aiba instruirea necesara in folosirea acestora si in respectarea normelor de siguranta si Securitate a muncii

Producatorul nu isi asuma nici o responsabilitate pentru pagubele produse unei terte parti in cazul folosirii necorespunzatoare sau a lipsei de intretinere a rampelor.

SISTEME PRINDERE

Standard



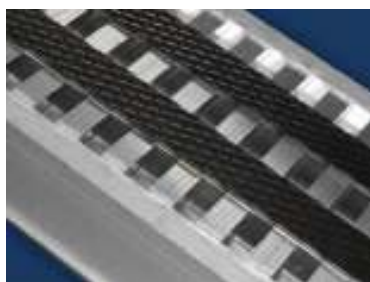
Carlig



Teava



Banda din cauciuc vulcanizat si ramforsat pentru utilaje cu senile si tamburi din otel



SISTEME DE ANCORARE

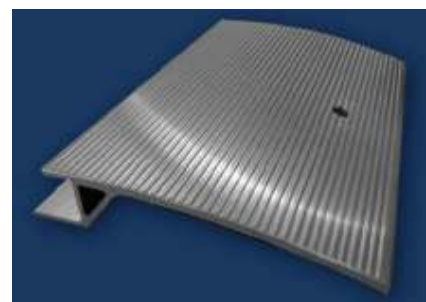
Fixare cu placa



Fixare cu lant



Fixare cu bolt



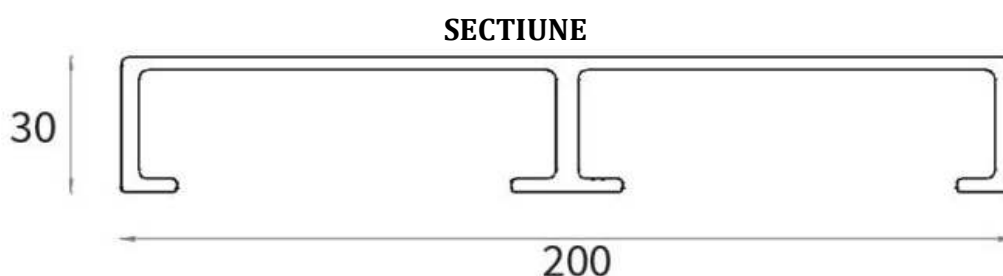
Balamale





I. RAMPE SUPER-LIGHT

Rampe model R.30.....S / P



Model	Capacitate de incarcare - kg / ampatament			Lungime mm	Latime mm	Greutate / pereche kg	Pret / pereche Eur fara TVA
	500	750	1000				
R30.15.20.1.S	1.000	1.350	1.535	1.500	200	10	198
R30.20.20.1.S	600	780	1.000	2.000	200	13	230
R30.25.20.06.S	450	530	610	2.500	200	16	270
R30.30.20.04.S	360	390	425	3.000	200	20	324
R30.35.20.03.S	245	275	320	3.500	200	23	378

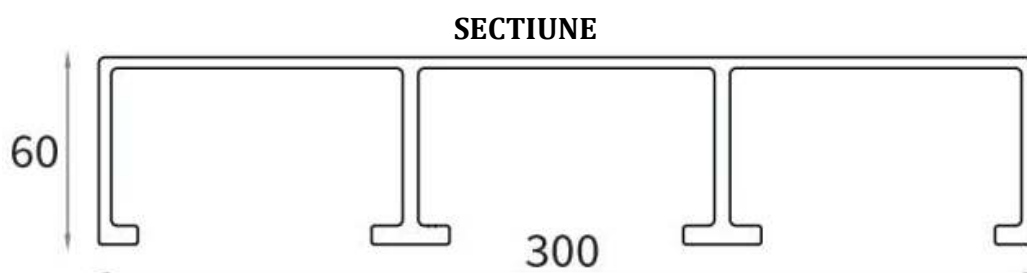
Model	Capacitate de incarcare - kg / ampatament			Lungime mm	Latime mm	Greutate / pereche kg	Pret / pereche Eur fara TVA
	500	750	1000				
R30.15.20.04.SP	480	480	480	1.500	200	12	359
R30.20.20.03.SP	380	380	380	2.000	200	15	390
R30.25.20.03.SP	300	300	300	2.500	200	18	431
R30.30.20.02.SP	250	250	250	3.000	200	22	485
R30.35.20.01.SP	180	180	180	3.500	200	26	539

* S - rampe simple

* P - rampe pliabile



Rampe model R.60.....S / P



Model	Capacitate de incarcare - kg / ampatament			Lungime mm	Latime mm	Greutate / pereche kg	Pret / pereche Eur fara TVA
	750	1.000	1.250				
R60.15.30.1.S	1.750	1.750	1.750	1.500	300	20	281
R60.20.30.1.S	1.750	1.700	1.700	2.000	300	27	378
R60.25.30.1.S	1.650	1.700	1.700	2.500	300	34	479
R60.30.30.1.S	1.250	1.405	1.610	3.000	300	41	577
R60.35.30.1.S	990	1.090	1.215	3.500	300	48	673

Model	Capacitate de incarcare - kg / ampatament			Lungime mm	Latime mm	Greutate / pereche kg	Pret / pereche Eur fara TVA
	750	1.000	1.250				
R60.15.30.1.SP	1.220	1.220	1.220	1.500	300	23	460
R60.20.30.1.SP	1.090	1.090	1.090	2.000	300	30	558
R60.25.30.1.SP	1.000	1.000	1.000	2.500	300	37	659
R60.30.30.09.SP	950	950	950	3.000	300	44	757
R60.35.30.07.SP	750	750	750	3.500	300	51	853

* S – rampe simple

* P – rampe pliabile

FABRICA DE CAROSARI SRL

RO 30105262

J35/1001/2012

www.fabricadecarosari.ro



Str. Octavian Goga, nr. 48

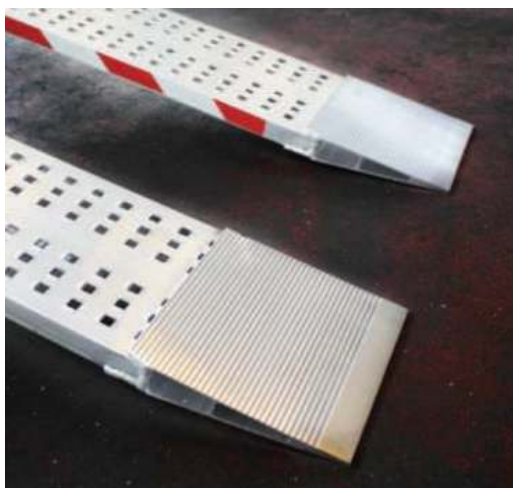
Dumbravita 307160, Jud. Timis, RO

Tel.: 0722.133.309

office@fabricadecarosari.ro

OPTIONAL

Posibilitatea de crestere a latimii rampei prin sudarea mai multor sectiuni impreuna



Societate certificata ISO 9001 si ISO 3834-2

Pleasure for perfection



Page 5





Rampe model R.50.....S

SECTIUNE



Model	Capacitate de incarcare - kg / ampatament			Lungime mm	Latime interna mm	Latime externa mm	Greutate / pereche kg	Pret / pereche Eur fara TVA
	750	1.000	1.250					
R50.15.32.2.S	2.000	2.000	2.000	1.500	250	320	18	293
R50.20.32.2.S	1.450	1.780	2.000	2.000	250	320	24	342
R50.25.32.1.S	1.025	1.250	1.550	2.500	250	320	30	425
R50.30.32.1.S	750	820	1.025	3.000	250	320	36	504
R50.35.32.08.S	650	735	850	3.500	250	320	42	590

* S - rampe simple





II. RAMPE LIGHT

Rampe model R.55.....S

SECTIUNE



Model	Capacitate de incarcare - kg / ampatament			Lungime mm	Latime interna mm	Latime externa mm	Greutate / pereche kg	Pret / pereche Eur fara TVA
	1.000	1.500	2.000					
R55.15.31.2	2,400	2,400	2,400	1.500	1,500	1,500	16	357
R55.20.31.1	1,750	1,750	1,750	2.000	2,000	2,000	21	417
R55.25.31.1	1,220	1,400	1,400	2.500	2,500	2,500	26	480
R55.30.31.1	940	1,100	1,150	3.000	3,000	3,000	31	582
R55.35.31.09	750	860	960	3.500	3,500	3,500	36	679

* S - rampe fara bordura

Rampe model R.65.....B

SECTIUNE



Model	Capacitate de incarcare - kg / ampatament			Lungime mm	Latime interna mm	Latime externa mm	Greutate / pereche kg	Pret / pereche Eur fara TVA
	750	1.000	1.250					
R65.15.35.2.B	2.000	2.000	2.000	1.500	290	350	20	282
R65.20.35.2.B	2.000	2.000	2.000	2.000	290	350	26	367



R65.25.35.2.B	1.700	1.900	2.000	2.500	290	350	32	450
R65.30.35.1.B	1.400	1.700	1.900	3.000	290	350	38	534
R65.35.35.1.B	1.150	1.250	1.400	3.500	290	350	44	618

* B – rampe cu bordura



Rampe model R.72.....S / SL

SECTIUNE



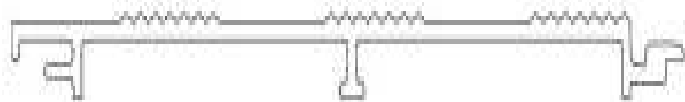
Model	Capacitate de incarcare - kg / ampatament			Lungime mm	Latime interna mm	Latime externa mm	Greutate / pereche kg	Pret / pereche Eur fara TVA
	750	1.000	1.250					
R72.15.31.1.S	1.685	1.685	1.685	1.500	250	310	18	288
R72.20.31.1.S	1.600	1.600	1.600	2.000	250	310	23	350
R72.25.31.1.S	1.360	1.590	1.600	2.500	250	310	28	414
R72.30.31.1.S	1.050	1.180	1.350	3.000	250	310	33	487
R72.35.31.1.S	849	936	1.036	3.500	250	310	39	576



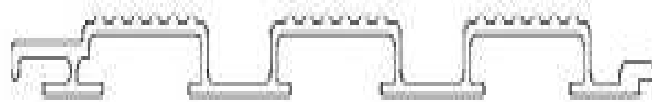
Model	Capacitate de incarcare - kg / ampatament			Lungime mm	Latime interna mm	Latime externa mm	Greutate / pereche kg	Pret / pereche Eur fara TVA
	750	1.000	1.250					
R72.15.51.1.SL	1.685	1.685	1.685	1.500	450	510	24	343
R72.20.51.1.SL	1.600	1.600	1.600	2.000	450	510	30	429
R72.25.51.1.SL	1.360	1.590	1.600	2.500	450	510	36	515
R72.30.51.1.SL	1.050	1.180	1.350	3.000	450	510	43	615
R72.35.51.1.SL	849	936	1.036	3.500	450	510	50	715

* S - rampe simple

* SL - rampe simple late



SUPRAFATA PLATA



SUPRAFATA STANDARD

Disponibile si in varianta pliabila - capacitatea de incarcare se reduce cu 35%.

Rampe model R.72.....B / BL

SECTIUNE



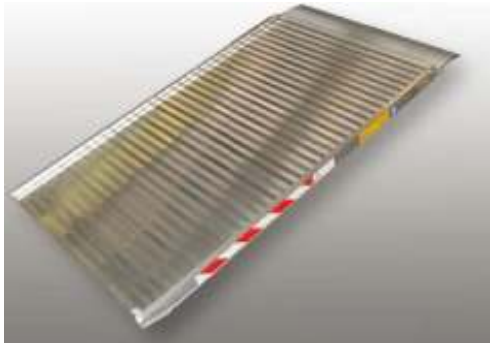
Model	Capacitate de incarcare - kg / ampatament			Lungime mm	Latime interna mm	Latime externa mm	Greutate / pereche kg	Pret / pereche Eur fara TVA
	750	1.000	1.250					
R72.15.31.1.B	1.685	1.685	1.685	1.500	250	310	18	288
R72.20.31.1.B	1.600	1.600	1.600	2.000	250	310	23	340
R72.25.31.1.B	1.360	1.590	1.600	2.500	250	310	28	414
R72.30.31.1.B	1.050	1.180	1.350	3.000	250	310	33	487
R72.35.31.1.B	849	936	1.036	3.500	250	310	39	576



Model	Capacitate de incarcare - kg / ampatament			Lungime mm	Latime interna mm	Latime externa mm	Greutate / pereche kg	Pret / pereche Eur fara TVA
	750	1.000	1.250					
R72.15.51.1.BL	1.685	1.685	1.685	1.500	450	510	24	343
R72.20.51.1.BL	1.600	1.600	1.600	2.000	450	510	30	429
R72.25.51.1.BL	1.360	1.590	1.600	2.500	450	510	36	515
R72.30.51.1.BL	1.050	1.180	1.350	3.000	450	510	43	615
R72.35.51.1.BL	849	936	1.036	3.500	450	510	50	715

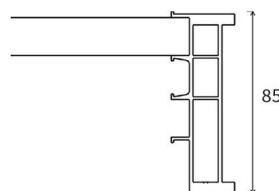
* B – rampe cu bordura

* BL – rampe cu bordura, late



Rampe model R.85.....S

SECTIUNE



Model	Capacitate de incarcare - kg / ampatament			Lungime mm	Latime mm	Greutate / pereche kg	Pret / pereche Eur fara TVA
	1.000	1.250	1.500				
R85.15.34.3.S	3.300	3.300	3.300	1.500	345	22	286
R85.20.34.3.S	3.300	3.300	3.300	2.000	345	29	377
R85.25.34.3.S	2.345	3.300	3.300	2.500	345	36	468
R85.30.34.2.S	1.740	2.325	2.790	3.000	345	44	572
R85.35.34.1.S	1.375	1.720	1.970	3.500	345	50	650



SUPRAFATA STANDARD



SUPRAFATA PLATA

Disponibile si in varianta pliabila – capacitatea de incarcare se reduce cu 35%.

Disponibile si in varianta de agatare cu carlig sau prindere cu bara metalica.

Rampe model R.100.....S / B

SECTIUNE



Model	Capacitate de incarcare - kg / ampatament			Lungime mm	Latime interna mm	Latime externa mm	Greutate / pereche kg	Pret / pereche Eur fara TVA
	1.000	1.250	1.500					
R100.25.37.3.S	3.600	3.600	3.600	2.500	300	370	38	487
R100.30.37.3.S	2.800	3.150	3.350	3.000	300	370	45	520
R100.32.37.3.S	2.550	2.850	3.300	3.200	300	370	47	601
R100.35.37.2.S	2.200	2.450	2.750	3.500	300	370	52	651
R100.40.37.2.S	1.850	2.000	2.200	4.000	300	370	59	751

Model	Capacitate de incarcare - kg / ampatament			Lungime mm	Latime interna mm	Latime externa mm	Greutate / pereche kg	Pret / pereche Eur fara TVA
	1.000	1.250	1.500					
R100.25.35.3.B	3.600	3.600	3.600	2.500	300	355	38	464
R100.30.35.3.B	2.800	3.150	3.350	3.000	300	355	45	549
R100.32.35.3.B	2.550	2.850	3.300	3.200	300	355	47	573
R100.35.35.2.B	2.200	2.450	2.750	3.500	300	355	52	634
R100.40.35.2.B	1.850	2.000	2.200	4.000	300	355	59	719

Societate certificata ISO 9001 si ISO 3834-2

Pleasure for perfection



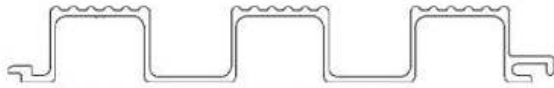
Rampe model R.110.....S / B

SECTIUNE



Model	Capacitate de incarcare - kg / ampatament			Lungime mm	Latime interna mm	Latime externa mm	Greutate / pereche kg	Pret / pereche Eur fara TVA
	1.000	1.250	1.500					
R110.25.38.3.S	3.810	3.810	3.810	2.500	305	385	42	528
R110.30.38.3.S	3.310	3.700	3.810	3.000	305	385	50	628
R110.32.38.3.S	3.050	3.400	3.780	3.200	305	385	52	653
R110.35.38.3.S	2.700	3.000	3.280	3.500	305	385	56	703
R110.40.38.2.S	2.330	2.500	2.700	4.000	305	385	63	792

Model	Capacitate de incarcare - kg / ampatament			Lungime mm	Latime interna mm	Latime externa mm	Greutate / pereche kg	Pret / pereche Eur fara TVA
	1.000	1.250	1.500					
R110.25.37.3.B	3.810	3.810	3.810	2.500	300	370	40	503
R110.30.37.3.B	3.310	3.700	3.810	3.000	300	370	49	615
R110.32.37.3.B	3.050	3.400	3.780	3.200	300	370	50	628
R110.35.37.3.B	2.700	3.000	3.280	3.500	300	370	55	691
R110.40.37.2.B	2.330	2.500	2.700	4.000	300	370	63	792



SUPRAFATA STANDARD



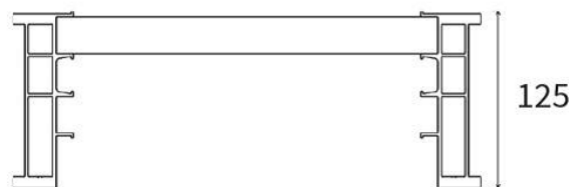
SUPRAFATA PLATA

Disponibile si in varianta pliabila – capacitatea de incarcare se reduce cu 35%.



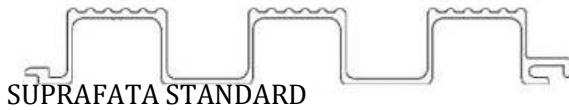
Rampe model R.125.....S / 125 SL

SECTIUNE



Model	Capacitate de incarcare – kg / ampatament			Lungime mm	Latime interna mm	Latime externa mm	Greutate / pereche kg	Pret / pereche Eur fara TVA
	1.000	1.250	1.500					
R125.25.40.4.S	4.110	4.110	4.110	2.500	320	400	50	644
R125.30.40.3.S	3.900	3.900	3.900	3.000	320	400	61	785
R125.32.40.3.S	3.600	3.900	3.900	3.200	320	400	65	837
R125.35.40.3.S	3.200	3.500	3.900	3.500	320	400	69	889
R125.40.40.3.S	2.600	2.800	3.100	4.000	320	400	80	1030

Model	Capacitate de incarcare – kg / ampatament			Lungime mm	Latime interna mm	Latime externa mm	Greutate / pereche kg	Pret / pereche Eur fara TVA
	1.000	1.250	1.500					
R125.25.43.4.SL	4.110	4.110	4.110	2.500	350	430	51	658
R125.30.43.3.SL	3.900	3.900	3.900	3.000	350	430	62	800
R125.32.43.3.SL	3.600	3.900	3.900	3.200	350	430	66	852
R125.35.43.3.SL	3.200	3.500	3.900	3.500	350	430	71	916
R125.40.43.3.SL	2.600	2.800	3.100	4.000	350	430	81	1045

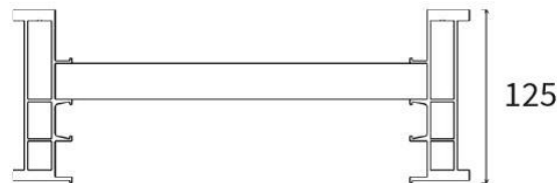


SUPRAFATA PLATA

Disponibile si in varianta pliabila – capacitatea de incarcare se reduce cu 35%.



Rampe model R.125.....B / 125 BL SECTIUNE



Model	Capacitate de incarcare - kg / ampatament			Lungime mm	Latime interna mm	Latime externa mm	Greutate / pereche kg	Pret / pereche Eur fara TVA
	1.000	1.250	1.500					
R125.25.38.4.B	4.110	4.110	4.110	2.500	320	385	50	644
R125.30.38.3.B	3.900	3.900	3.900	3.000	320	385	60	773
R125.32.38.3.B	3.600	3.900	3.900	3.200	320	385	64	824
R125.35.38.3.B	3.200	3.500	3.900	3.500	320	385	69	889
R125.40.38.3.B	2.600	2.800	3.100	4.000	320	385	75	1017

Model	Capacitate de incarcare - kg / ampatament			Lungime mm	Latime interna mm	Latime externa mm	Greutate / pereche kg	Pret / pereche Eur fara TVA
	1.000	1.250	1.500					
R125.25.41.4.BL	4.110	4.110	4.110	2.500	350	415	52	671
R125.30.41.3.BL	3.900	3.900	3.900	3.000	350	415	61	787
R125.32.41.3.BL	3.600	3.900	3.900	3.200	350	415	65	838
R125.35.41.3.BL	3.200	3.500	3.900	3.500	350	415	71	916
R125.40.41.3.BL	2.600	2.800	3.100	4.000	350	415	80	1032

Disponibile si in varianta pliabila – capacitatea de incarcare se reduce cu 35%.



III. RAMPE MEDIUM

Rampe model R.130S / 130 SL

SECTIUNE



Model	Capacitate de incarcare - kg / ampatament			Lungime mm	Latime interna mm	Latime externa mm	Greutate / pereche kg	Pret / pereche Eur fara TVA
	1.500	1.750	2.000					
R130.15.44.5.S	5.100	5.100	5.100	1.500	350	442	38	477
R130.20.44.5.S	5.100	5.100	5.100	2.000	350	442	50	625
R130.25.44.5.S	5.100	5.100	5.100	2.500	350	442	62	775
R130.30.44.5.S	5.100	5.100	5.100	3.000	350	442	74	926
R130.35.44.5.S	5.100	5.100	5.100	3.500	350	442	86	1076
R130.40.44.4.S	4.750	4.875	4.875	4.000	350	442	97	1213
R130.45.44.4.S	4.350	4.630	4.970	4.500	350	442	109	1363



Model	Capacitate de incarcare - kg / ampatament			Lungime mm	Latime interna mm	Latime externa mm	Greutate / pereche kg	Pret / pereche Eur fara TVA
	1.500	1.750	2.000					
R130.15.49.5.SL	5.100	5.100	5.100	1.500	400	492	42	526
R130.20.49.5.SL	5.100	5.100	5.100	2.000	400	492	55	692
R130.25.49.5.SL	5.100	5.100	5.100	2.500	400	492	69	864
R130.30.49.5.SL	5.100	5.100	5.100	3.000	400	492	83	1038
R130.35.49.5.SL	5.100	5.100	5.100	3.500	400	492	96	1200
R130.40.49.4.SL	4.750	4.875	4.875	4.000	400	492	107	1339
R130.45.49.4.SL	4.350	4.630	4.970	4.500	400	492	121	1514



Rampe model R.130.....B / 130 BL

SECTIUNE



Model	Capacitate de incarcare - kg / ampatament			Lungime mm	Latime interna mm	Latime externa mm	Greutate / pereche kg	Pret / pereche Eur fara TVA
	1.500	1.750	2.000					
R130.15.41.5.B	5.100	5.100	5.100	1.500	350	418	36	450
R130.20.41.5.B	5.100	5.100	5.100	2.000	350	418	48	602
R130.25.41.5.B	5.100	5.100	5.100	2.500	350	418	60	751
R130.30.41.5.B	5.100	5.100	5.100	3.000	350	418	72	900
R130.35.41.5.B	5.100	5.100	5.100	3.500	350	418	84	1051
R130.40.41.4.B	4.750	4.875	4.875	4.000	350	418	95	1188
R130.45.41.4.B	4.350	4.630	4.970	4.500	350	418	107	1339



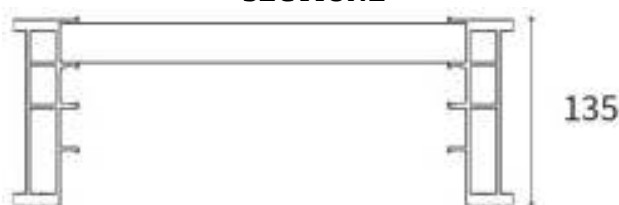
Model	Capacitate de incarcare - kg / ampatament			Lungime mm	Latime interna mm	Latime externa mm	Greutate / pereche kg	Pret / pereche Eur fara TVA
	1.500	1.750	2.000					
R130.15.46.5.BL	5.100	5.100	5.100	1.500	400	468	38	476
R130.20.46.5.BL	5.100	5.100	5.100	2.000	400	468	51	639
R130.25.46.5.BL	5.100	5.100	5.100	2.500	400	468	64	801
R130.30.46.5.BL	5.100	5.100	5.100	3.000	400	468	77	963
R130.35.46.5.BL	5.100	5.100	5.100	3.500	400	468	90	1125
R130.40.46.4.BL	4.750	4.875	4.875	4.000	400	468	101	1265
R130.45.46.4.BL	4.350	4.630	4.970	4.500	400	468	114	1427

Disponibile si in varianta pliabila - capacitatea de incarcare se reduce cu 35%.

Optional - banda de cauciuc pentru protejarea rampelor de senilele metalice ale utilajelor - 40 Eur / ml



Rampe model R.135.....S / SL SECTIUNE



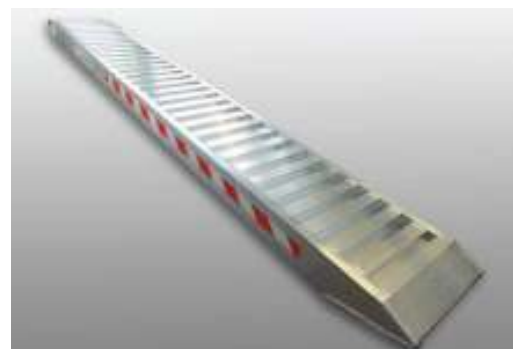
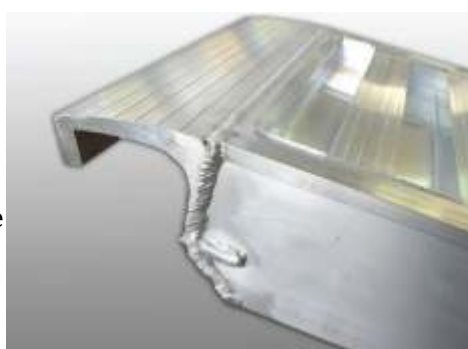
Model	Capacitate de incarcare - kg / ampatament			Lungime mm	Latime interna mm	Latime externa mm	Greutate / pereche kg	Pret / pereche Eur fara TVA
	1.500	1.750	2.000					
R135.25.42.7.S	7.200	7.200	7.200	2.500	340	420	70	869
R135.30.42.6.S	6.855	7.200	7.200	3.000	340	420	85	1055
R135.35.42.5.S	5.120	5.850	6.825	3.500	340	420	92	1143
R135.40.42.4.S	4.065	4.520	5.085	4.000	340	420	104	1292
R135.45.42.3.S	3.365	3.670	4.035	4.500	340	420	117	1459



Model	Capacitate de incarcare - kg / ampatament			Lungime mm	Latime interna mm	Latime externa mm	Greutate / pereche kg	Pret / pereche Eur fara TVA
	1.500	1.750	2.000					
R135.20.47.7.SL	7.200	7.200	7.200	2.500	390	470	76	945
R135.25.47.7.SL	6.855	7.200	7.200	3.000	390	470	89	1110
R135.30.47.6.SL	5.120	5.850	6.825	3.500	390	470	96	1196
R135.35.47.5.SL	4.065	4.520	5.085	4.000	390	470	110	1365
R135.40.47.4.SL	3.365	3.670	4.035	4.500	390	470	123	1529

Disponibile si in varianta pliabila - capacitatea de incarcare se reduce cu 35%.

Disponibile si in varianta de agatare cu carlig (vezi foto)



Rampe model R.135.....B / BL

SECTIUNE



Model	Capacitate de incarcare - kg / ampatament			Lungime mm	Latime interna mm	Latime externa mm	Greutate / pereche kg	Pret / pereche Eur fara TVA
	1.500	1.750	2.000					
R135.25.40.7.B	7.200	7.200	7.200	2.500	350	405	70	869
R135.30.40.6.B	6.855	7.200	7.200	3.000	350	405	85	1055
R135.35.40.5.B	5.120	5.850	6.825	3.500	350	405	92	1143
R135.40.40.4.B	4.065	4.520	5.085	4.000	350	405	104	1292
R135.45.40.3.B	3.365	3.670	4.035	4.500	350	405	117	1459

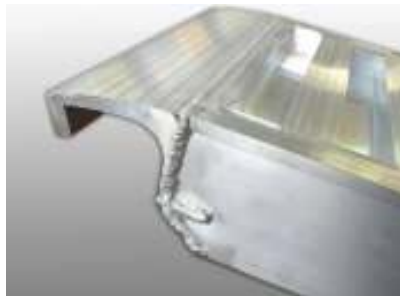


Model	Capacitate de incarcare - kg / ampatament			Lungime mm	Latime interna mm	Latime externa mm	Greutate / pereche kg	Pret / pereche Eur fara TVA
	1.500	1.750	2.000					
R135.25.45.7.BL	7.200	7.200	7.200	2.500	400	455	76	945
R135.30.45.7.BL	6.855	7.200	7.200	3.000	400	455	89	1110
R135.35.45.6.BL	5.120	5.850	6.825	3.500	400	455	96	1196
R135.40.45.5.BL	4.065	4.520	5.085	4.000	400	455	110	1365
R135.45.45.3.BL	3.365	3.670	4.035	4.500	400	455	123	1529

Disponibile si in varianta pliabila - capacitatea de incarcare se reduce cu 35%.

Optional - banda de cauciuc pentru protejarea rampelor de senilele metalice ale utilajelor - 40 Eur / ml

Disponibile si in varianta de agatare cu carlig (vezi foto)



Rampe model R.175.....S / SL

SECTIUNE



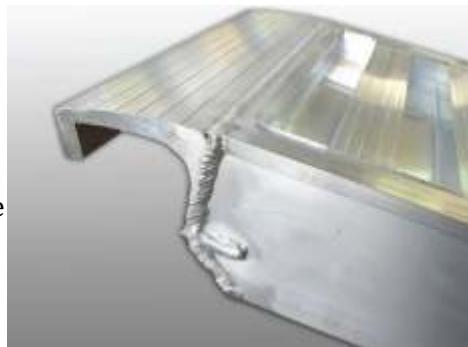
Model	Capacitate de incarcare - kg / ampatament			Lungime mm	Latime interna mm	Latime externa mm	Greutate / pereche kg	Pret / pereche Eur fara TVA
	1.500	1.750	2.000					
R175.35.48.8.S	6.960	7.955	8.719	3.500	400	480	107	1380
R175.40.48.6.S	5.520	6.135	6.900	4.000	400	480	123	1587
R175.45.48.5.S	4.555	4.970	5.465	4.500	400	480	137	1767
R175.50.48.4.S	3.860	4.155	4.505	5.000	400	480	152	1961



Model	Capacitate de incarcare - kg / ampatament			Lungime mm	Latime interna mm	Latime externa mm	Greutate / pereche kg	Pret / pereche Eur fara TVA
	1.500	1.750	2.000					
R175.35.58.8.SL	6.960	7.955	8.719	3.500	500	580	117	1510
R175.40.58.6.SL	5.520	6.135	6.900	4.000	500	580	134	1728
R175.45.58.5.SL	4.555	4.970	5.465	4.500	500	580	150	1935
R175.50.58.4.SL	3.860	4.155	4.505	5.000	500	580	167	2154

Disponibile si in varianta pliabila - capacitatea de incarcare se reduce cu 35%.

Disponibile si in varianta de agatare cu carlig (vezi foto)



Rampe model R.175.....B / BL

SECTIUNE



Model	Capacitate de incarcare - kg / ampatament			Lungime mm	Latime interna mm	Latime externa mm	Greutate / pereche kg	Pret / pereche Eur fara TVA
	1.500	1.750	2.000					
R175.35.48.8.B	6.960	7.955	8.719	3.500	400	480	107	1380
R175.40.48.6.B	5.520	6.135	6.900	4.000	400	480	123	1587
R175.45.48.5.B	4.555	4.970	5.465	4.500	400	480	137	1767
R175.50.48.4.B	3.860	4.155	4.505	5.000	400	480	152	1961

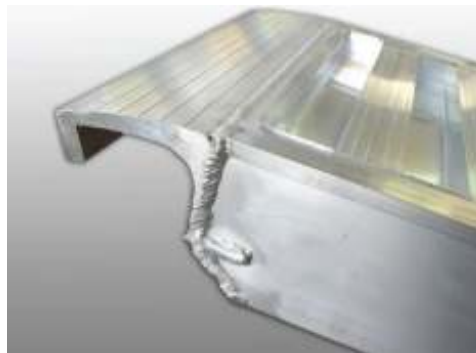


Model	Capacitate de incarcare - kg / ampatament			Lungime mm	Latime interna mm	Latime externa mm	Greutate / pereche kg	Pret / pereche Eur fara TVA
	1.500	1.750	2.000					
R175.35.58.8.BL	6.960	7.955	8.719	3.500	500	580	117	1510
R175.40.58.6.BL	5.520	6.135	6.900	4.000	500	580	134	1728
R175.45.58.5.BL	4.555	4.970	5.465	4.500	500	580	150	1935
R175.50.58.4.BL	3.860	4.155	4.505	5.000	500	580	167	2154

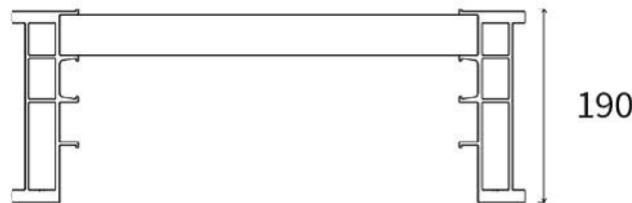
Disponibile si in varianta pliabila - capacitatea de incarcare se reduce cu 35%.

Optional - banda de cauciuc pentru protejarea rampelor de senilele metalice ale utilajelor - 40 Eur / ml

Disponibile si in varianta de agatare cu carlig (vezi foto)



Rampe model R.190.....S / B SECTIUNE



Model	Capacitate de incarcare - kg / ampatament			Lungime mm	Latime interna mm	Latime externa mm	Greutate / pereche kg	Pret / pereche Eur fara TVA
	1.500	1.750	2.000					
R190.35.61.10.S	9.700	10.450	10.450	3.500	500	610	140	1736
R190.40.61.9.S	7.700	8.580	9.650	4.000	500	610	163	2021
R190.45.61.7.S	6.400	6.980	7.680	4.500	500	610	180	2232
R190.50.61.6.S	5.450	5.870	6.360	5.000	500	610	200	2480

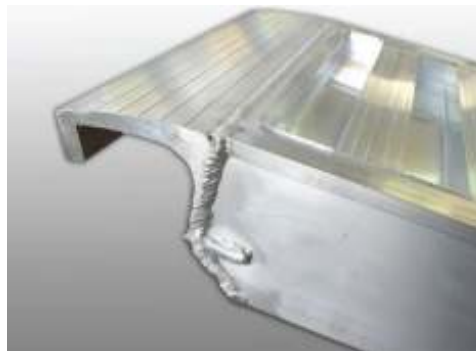


Model	Capacitate de incarcare - kg / ampatament			Lungime mm	Latime interna mm	Latime externa mm	Greutate / pereche kg	Pret / pereche Eur fara TVA
	1.500	1.750	2.000					
R190.35.59.10.B	9.700	10.450	10.450	3.500	500	595	140	1736
R190.40.59.9.B	7.700	8.580	9.650	4.000	500	595	160	1984
R190.45.59.7.B	6.400	6.980	7.680	4.500	500	595	174	2158
R190.50.59.6.B	5.450	5.870	6.360	5.000	500	595	196	2430

Disponibile si in varianta pliabila - capacitatea de incarcare se reduce cu 35%.

Optional - banda de cauciuc pentru protejarea rampelor de senilele metalice ale utilajelor - 40 Eur / ml

Disponibile si in varianta de agatare cu carlig sau teava (vezi foto)



IV. RAMPE HEAVY-DUTY

Rampe model R.168.....S / B

SECTIUNE



Model	Capacitate de incarcare - kg / ampatament			Lungime mm	Latime interna mm	Latime externa mm	Greutate / pereche kg	Pret / pereche Eur fara TVA
	1.000	1.500	2.000					
R168.25.50.10	10,000	10,000	10,000	2,500	450	500	82	1.085
R168.30.50.10	9,200	10,000	10,000	3,000	450	500	96	1.165
R181.25.50.12	12,900	12,900	12,900	2,500	450	500	84	1.172
R181.30.50.11	9,800	11,700	11,700	3,000	450	500	98	1.254

Societate certificata ISO 9001 si ISO 3834-2

Pleasure for perfection



Rampe model R.181.....SL / BL

SECTIUNE



Model	Capacitate de incarcare - kg / ampatament			Lungime mm	Latime interna mm	Latime externa mm	Greutate / pereche kg	Pret / pereche Eur fara TVA
	1.000	1.500	2.000					
R181.25.55.11.L	11,000	11,000	11,000	2,500	500	500	88	1.469
R181.30.55.11.L	11,000	11,000	11,000	3,000	500	500	104	1.695
R181.35.55.11.L	8,700	10,000	11,000	3,500	500	500	120	1.926

Rampe model R.210.....S / B

SECTIUNE



Model	Capacitate de incarcare - kg / ampatament			Lungime mm	Latime interna mm	Latime externa mm	Greutate / pereche kg	Pret / pereche Eur fara TVA
	1.000	1.500	2.000					
R210.30.64.16	16,900	16,900	16,900	3,000	550	640	138	1.852
R210.35.64.16	14,300	16,900	16,900	3,500	550	640	158	2.165
R210.40.64.15	11,600	13,400	15,100	4,000	550	640	180	2.414
R210.45.64.12	9,800	11,000	12,500	4,500	550	640	202	2.704
R210.50.64.10	8,500	9,400	10,500	5,000	550	640	224	2.998



Rampe model R.220.....S / SL / B / BL

SECTIUNE



Model	Capacitate de incarcare - kg / ampatament			Lungime mm	Latime interna mm	Latime externa mm	Greutate / pereche kg	Pret / pereche Eur fara TVA
	1.500	1.750	2.000					
R220.40.62.12.S	12.000	12.000	12.000	4.000	500	620	173	2180
R220.45.62.12.S	9.600	12.000	12.000	4.500	500	620	194	2445
R220.50.62.9.S	8.175	8.800	9.535	5.000	500	620	216	2722

Model	Capacitate de incarcare - kg / ampatament			Lungime mm	Latime interna mm	Latime externa mm	Greutate / pereche kg	Pret / pereche Eur fara TVA
	1.500	1.750	2.000					
R220.20.61.15.SL	15000	15000	15000	2000	610	610	83	1.080
R220.25.61.15.SL	15000	15000	15000	2500	610	610	103	1.340
R220.30.61.15.SL	15000	15000	15000	3000	610	610	134	1.750





Model	Capacitate de incarcare - kg / ampatament			Lungime mm	Latime interna mm	Latime externa mm	Greutate / pereche kg	Pret / pereche Eur fara TVA
	1.500	1.750	2.000					
R220.40.58.12.B	12.000	12.000	12.000	4.000	500	580	167	2105
R220.45.58.12.B	9.600	12.000	12.000	4.500	500	580	188	2369
R220.50.58.9.B	8.175	8.800	9.535	5.000	500	580	210	2646

Model	Capacitate de incarcare - kg / ampatament			Lungime mm	Latime interna mm	Latime externa mm	Greutate / pereche kg	Pret / pereche Eur fara TVA
	1.500	1.750	2.000					
R220 /40BL	12.000	12.000	12.000	4.000	550	625	173	2180
R220 /45BL	9.600	12.000	12.000	4.500	550	625	194	2445
R220 /50BL	8.175	8.800	9.535	5.000	550	625	216	2722

Disponibile si in varianta pliabila - capacitatea de incarcare se reduce cu 35%.

Optional - banda de cauciuc pentru protejarea rampelor de senilele metalice ale utilajelor - 40 Eur / ml (vezi foto)

Disponibile si in varianta de agatare cu carlig sau teava



V. RAMPE SUPER HEAVY-DUTY

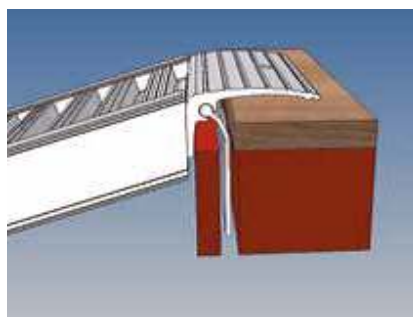




Model	Capacitate de incarcare - kg / ampatament			Lungime mm	Latime interna mm	Latime externa mm	Greutate / pereche kg	Pret / pereche Eur fara TVA
	1.000	1.500	2.000					
R120.20.30.18	18,600	18,600	18,600	2,000	300	300	70	1.646
R120.25.30.14	13,400	14,100	14,100	2,500	300	300	86	1.798
R120.30.30.10	10,000	10,000	10,000	3,000	300	300	100	2.161
R120.35.30.9	8,000	9,000	9,400	3,500	300	300	116	2.301
R120.40.30.8	6,600	7,300	8,100	4,000	300	300	132	2.567

Model	Capacitate de incarcare - kg / ampatament			Lungime mm	Latime interna mm	Latime externa mm	Greutate / pereche kg	Pret / pereche Eur fara TVA
	1.000	1.500	2.000					
R120.20.40.18	18,600	18,600	18,600	2,000	400	400	90	1.761
R120.25.40.14	13,400	14,100	14,100	2,500	400	400	108	2.082
R120.30.40.11	10,000	11,300	11,300	3,000	400	400	128	2.430
R120.35.40.9	8,000	9,000	9,400	3,500	400	400	146	2.749
R120.40.40.7	6600	7300	8100	4000	400	400	164	2.931

Model	Capacitate de incarcare - kg / ampatament			Lungime mm	Latime interna mm	Latime externa mm	Greutate / pereche kg	Pret / pereche Eur fara TVA
	1.000	1.500	2.000					
R120.20.45.28	28,000	28,000	28,000	2,000	450	450	106	2.122
R120.25.45.21	20,000	21,000	21,000	2,500	450	450	128	2.558
R120.30.45.17	15,000	17,000	17,000	3,000	450	450	152	3.059
R120.35.45.13	12,000	13,000	14,200	3,500	450	450	174	3.355
R120.40.45.11	10,000	11,000	12,200	4,000	450	450	196	3.829



Sisteme de prindere

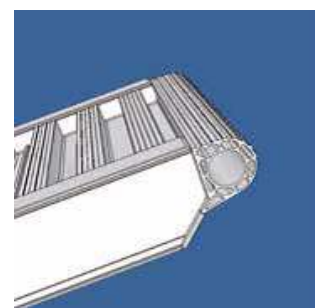
Societate certificata ISO 9001 si ISO 3834-2

Pleasure for perfection



Model	Capacitate de incarcare - kg / ampatament			Lungime mm	Latime interna mm	Latime externa mm	Greutate / pereche kg	Pret / pereche Eur fara TVA
	1.000	1.500	2.000					
R140.20.45.37	37,800	37,800	37,800	2,000	450	450	114	2.364
R140.25.45.28	27,200	28,600	28,600	2,500	450	450	140	2.956
R140.30.45.23	20,000	23,000	23,000	3,000	450	450	166	3.506
R140.35.45.19	16,100	18,300	19,200	3,500	450	450	190	3.985
R140.40.45.16	13,400	15,000	16,500	4,000	450	450	216	4.486

Model	Capacitate de incarcare - kg / ampatament			Lungime mm	Latime interna mm	Latime externa mm	Greutate / pereche kg	Pret / pereche Eur fara TVA
	1.000	1.500	2.000					
R140.20.60.50.L	50,000	50,000	50,000	2,000	600	600	154	3.267
R140.25.60.38.L	36,300	38,100	38,100	2,500	600	600	186	3.829
R140.30.60.30.L	27,000	30,500	30,500	3,000	600	600	220	4.447
R140.35.60.25.L	21,500	24,400	25,600	3,500	600	600	254	4.976
R140.40.60.22.L	18,600	20,000	22,000	4,000	600	600	288	5.592



VI. RAMPE PENTRU VAN-URI

Rampe pentru incarcare / descarcare VAN

Rampele pentru incarcare Van-uri marca Fabrica de carosari reprezinta solutia ideala pentru satisfacerea necesitatilor de incarcare ale oricarui client.

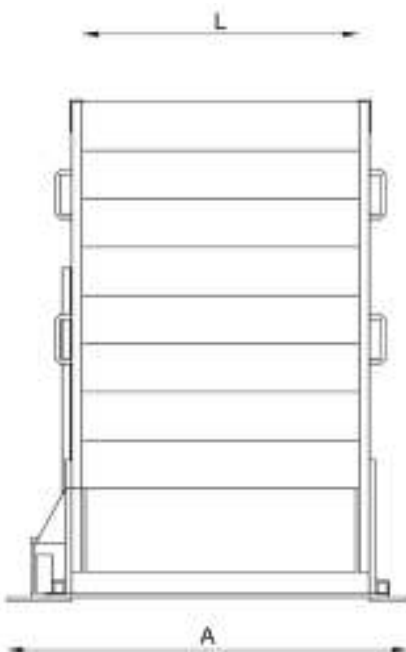
Este cel mai potrivit sistem pentru incarcarea si descarcare sarcinilor de capacitate mica si ele pot fi montate pe toate tipurile de van-uri.

Greutatea redusa si dimensiunile lor permit aproape neschimbata sarcina utila a vehiculului si ii simplifica mobilitatea datorita unui sistem de ridicare si rotire foarte simplu si eficient.

Rampele sunt construite complet din profile de Aluminiu extrudat tratat pentru o functionare de lunga durata si nu necesita nici o intretinere speciala.

Suprafata lor este dintr-un aliaj de Aluminiu antialunecare.

SECTIUNE





Model cu sistem de rotire si pliere pe peretele lateral



Model	Capacitate de incarcare - kg	Lungime mm	Inaltime inchisa (mm)	Latime interioara (mm)	Latime exteriora (mm)	Greutate kg / buc.	Pret / buc. Eur fara TVA
R.VAN.P.86.20.115.80.06	600	2000	1020	800	1150	28	2.110
R.VAN.P.86.22.115.80.06	600	2250	1200	800	1150	30	2.225
R.VAN.P.86.25.115.80.06	600	2500	1300	800	1150	35	2.340
R.VAN.P.86.27.115.80.06	600	2750	1480	800	1150	37	2.455
R.VAN.P.86.30.115.80.06	600	3000	1570	800	1150	42	2.570
R.VAN.P.106.20.135.100.06	600	2000	1020	1000	1350	47	2.225
R.VAN.P.106.22.135.100.06	600	2250	1200	1000	1350	53	2.340
R.VAN.P.106.25.135.100.06	600	2500	1300	1000	1350	58	2.455
R.VAN.P.106.27.135.100.06	600	2750	1480	1000	1350	62	2.570
R.VAN.P.106.30.135.100.06	600	3000	1570	1000	1350	68	2.685

Model cu sistem de ridicare si pliere in fata usilor spate

Model	Capacitate de incarcare - kg	Lungime mm	Inaltime inchisa (mm)	Latime interioara (mm)	Latime exteriora (mm)	Greutate kg / buc.	Pret / buc. Eur fara TVA
R.VAN.R.86.20.115.80.06	600	2000	1020	800	1150	28	1.995
R.VAN.R.86.22.115.80.06	600	2250	1200	800	1150	30	2.100
R.VAN.R.86.25.115.80.06	600	2500	1300	800	1150	35	2.225
R.VAN.R.86.27.115.80.06	600	2750	1480	800	1150	37	2.340
R.VAN.R.86.30.115.80.06	600	3000	1570	800	1150	42	2.455
R.VAN.R.106.20.135.100.06	600	2000	1020	1000	1350	47	2.100

Societate certificata ISO 9001 si ISO 3834-2

Pleasure for perfection

FABRICA DE CAROSARI SRL

RO 30105262

J35/1001/2012

www.fabricadecarosari.ro



Str. Octavian Goga, nr. 48

Dumbravita 307160, Jud. Timis, RO

Tel.: 0722.133.309

office@fabricadecarosari.ro

R.VAN.R.106.22.135.100.06	600	2250	1200	1000	1350	53	2.225
R.VAN.R.106.25.135.100.06	600	2500	1300	1000	1350	58	2.340
R.VAN.R.106.27.135.100.06	600	2750	1480	1000	1350	62	2.455
R.VAN.R.106.30.135.100.06	600	3000	1570	1000	1350	68	2.570



Caracteristici principale:

- Capacitate de incarcare 600 kg;
- Sistem de ridicare / pliere si culisare laterala
- Volum minim ocupat
- Sistem de rotire
- Instalare foarte simpla si rapida
- Disponibile in diverse variante cu multiple dimensiuni pentru orice nevoi

Nota:

- Greutatile trecute in tabelul de mai sus nu includ si sistemul de fixare pe vehicul
- Toate rampele sunt furnizate cu Kit rapid de instalare

Societate certificata ISO 9001 si ISO 3834-2

Pleasure for perfection

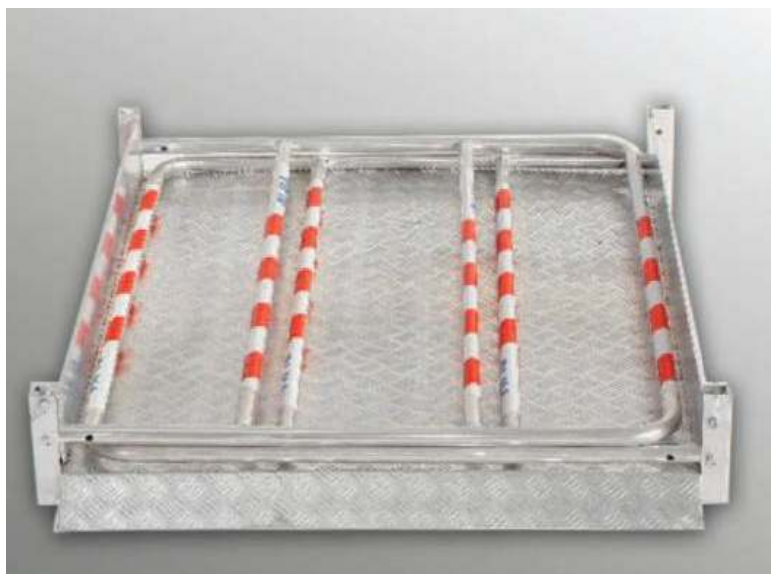
VII. RAMPE TRECERE - PASARELE DIN ALUMINIU

Pasarelele – rampele de trecere marca Fabrica de carosari, echipate cu platforma si mana curenta rabatabila sunt fabricate complet din aliaje de Aluminiu.

Ele sunt produse in concordanta cu legislatia din domeniu si respecta normele europene UNI EN ISO 14122-3 si UNI EN 1398-2009.

Suprafata platformei este fabricata complet din aliaj de aluminiu antiderapant si permite scurgerea cu usurinta a apei de ploaie si a zapezii.

Mana curenta are o inaltime de 1 m si o protectie suplimentara mediana instalata la inaltimea de 0,5 m.





Model	Capacitate de incarcare - kg	Lungime mm	Latime interna mm	Latime externa mm	Greutate kg / buc.	Pret / buc. Eur fara TVA
RT150.15.80.06	600	1.500	730	800	28	840
RT150.15.100.06	600	1.500	930	1.000	33	990
RT150.15.120.06	600	1.500	1.130	1.200	38	1141
RT150.20.80.06	600	2.000	730	800	38	1141
RT150.20.100.06	600	2.000	930	1.000	44	1321
RT150.20.120.06	600	2.000	1.130	1.200	51	1530
RT150.25.80.06	600	2.500	730	800	48	1440
RT150.25.100.06	600	2.500	930	1.000	56	1681
RT150.25.120.06	600	2.500	1.130	1.200	64	1921
RT150.30.80.06	600	3.000	730	800	60	1800
RT150.30.100.06	600	3.000	930	1.000	70	2101
RT150.30.120.06	600	3.000	1.130	1.200	80	2402
RT150.35.80.06	600	3.500	730	800	70	2101
RT150.35.100.06	600	3.500	930	1.000	81	2430
RT150.35.120.06	600	3.500	1.130	1.200	93	3.100
RT150.40.100.06	600	4.000	930	1.000	93	2790
RT150.40.120.06	600	4.000	1.130	1.200	106	3182
RT150.45.120.06	600	4.500	1.130	1.200	120	3600



FABRICA DE CAROSARI SRL

RO 30105262

J35/1001/2012

www.fabricadecarosari.ro



Str. Octavian Goga, nr. 48

Dumbravita 307160, Jud. Timis, RO

Tel.: 0722.133.309

office@fabricadecarosari.ro

VIII. RAMPE SPECIALE

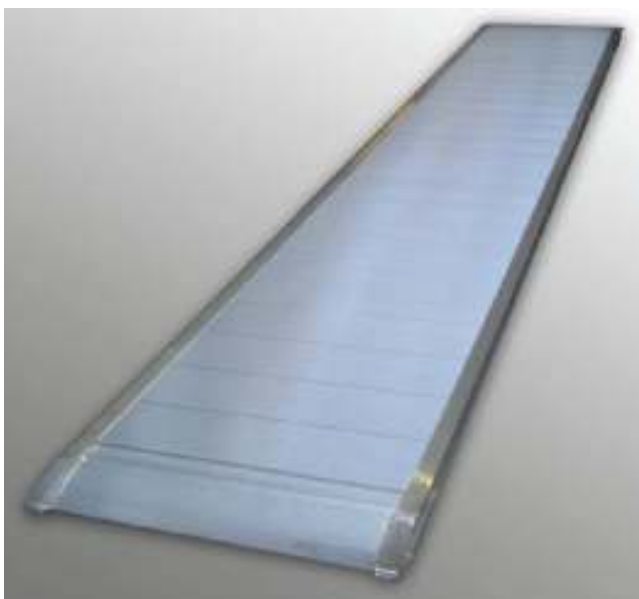
Rampe pt platforme aeriene



Rampe pt utilaje cu senile si cilindrii de otel



Rampe cu dimensiuni speciale



Rampe pliabile



Societate certificata ISO 9001 si ISO 3834-2

Pleasure for perfection